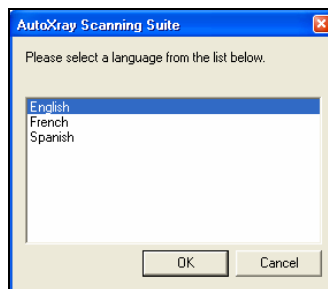
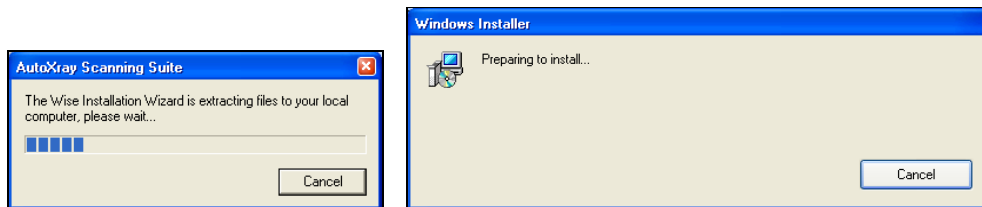


AutoXray AX7000 TechScan Scanning Suite Installation Instructions

1. Select the language you would like to install and click **OK**.



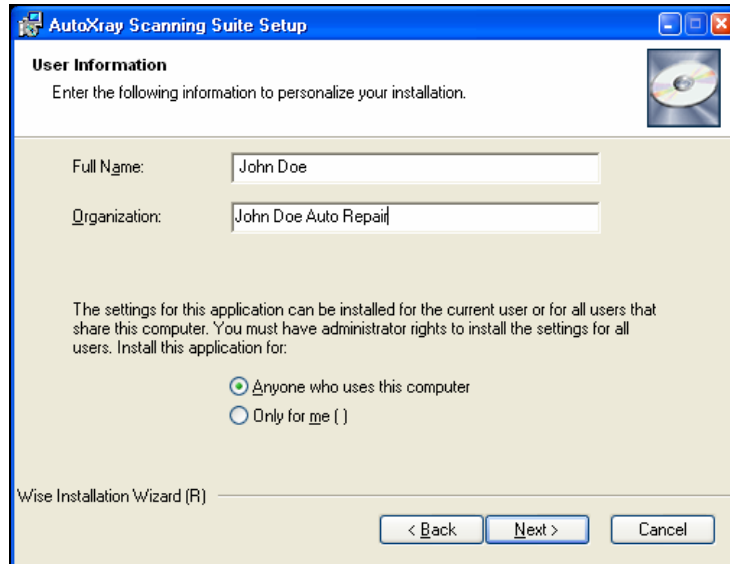
2. Wait for the installation to begin.



3. Close any open windows and click **Next**.

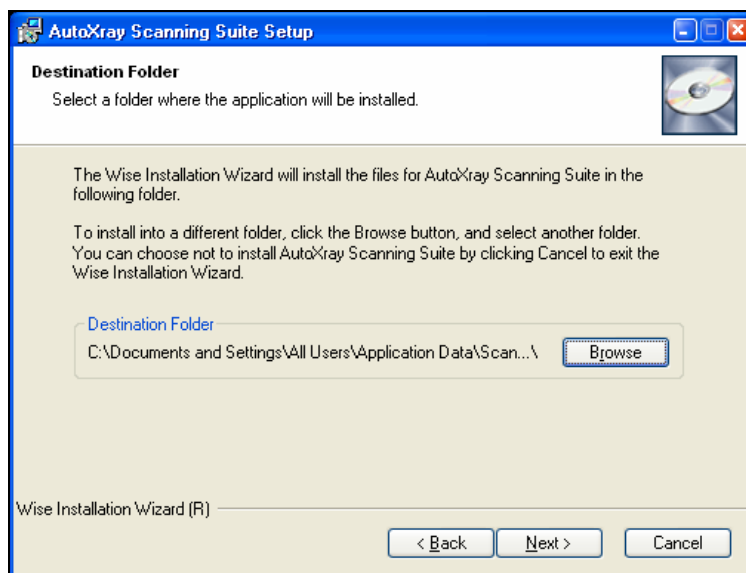


4. Enter your information and choose which users you wish to allow to access this program. Then click **Next**.

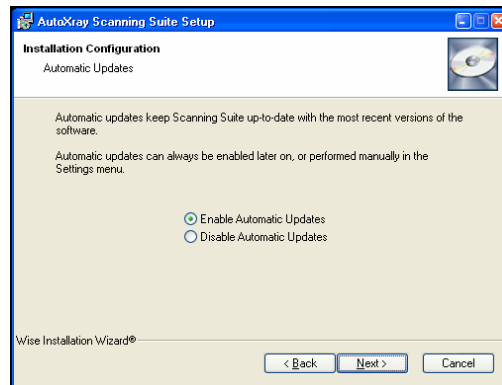


5. The Scanning Suite will install the files in a default location. Click **Next** to continue.

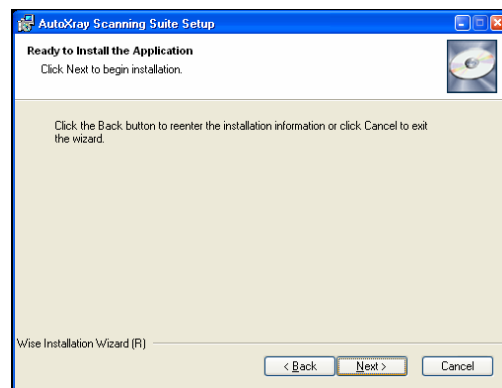
If you prefer to install the files in another location, click **Browse** to choose another destination folder and click **Next**.



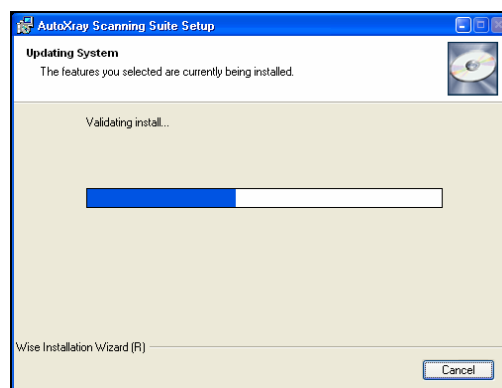
6. Select if you would like to **Enable** or **Disable** Automatic Updates and click **Next**. If enabled, Scanning Suite will automatically check for updates. This feature can be easily modified in the Setup Menu after Scanning Suite is installed.



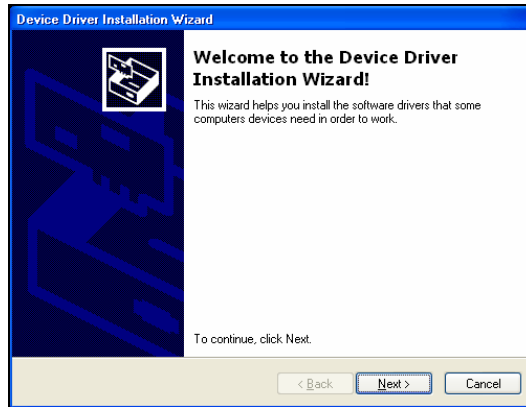
7. Click **Next** to install Scanning Suite.



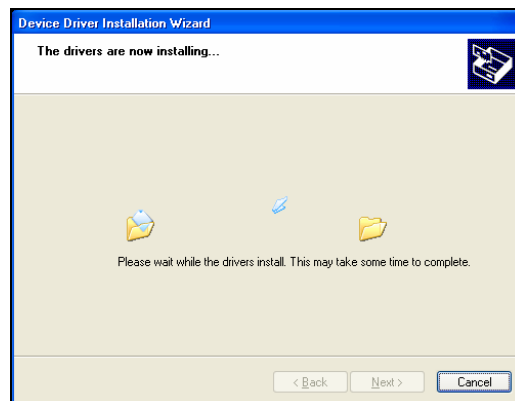
8. The installation will begin.



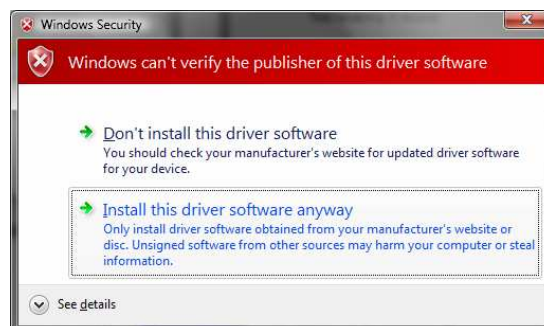
9. During the installation, the **Device Driver Wizard** will open. This wizard will help install the AutoXRay TechScan Drivers. Click **Next** to begin.



10. Wait while the drivers are installed.



11. If you see a message similar to the ones below, click **Continue Anyway** or **Install this driver software anyway**.

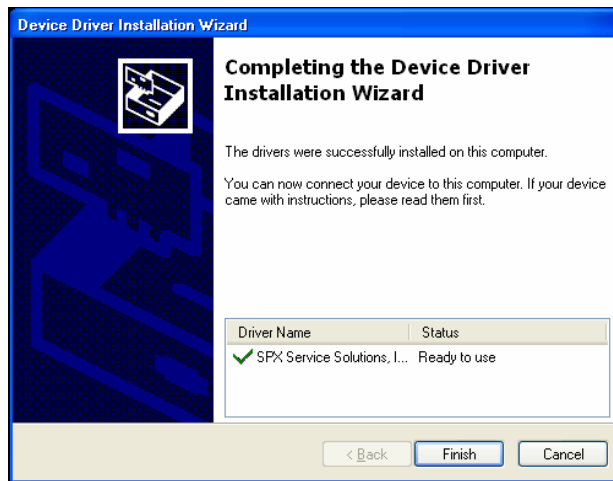


NOTE: The Device Driver Installation Wizard will normally run three times. It is important to run the wizard completely each time it appears.

Vista: The Device Drive Wizard may appear behind other windows. If this occurs, you must bring it to the front by clicking the button on the task bar (see below).



12. Once the drivers are installed, click **Finish** to exit the Device Driver Installation Wizard.

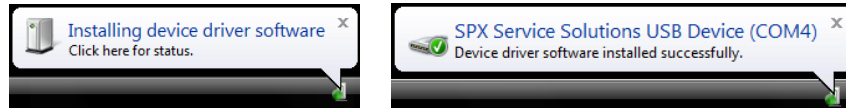


13. When the installation is complete, click **Finish** to exit.



14. Connect your AutoXray TechScan to your PC and power the tool on.

Vista: The TechScan will automatically be detected and the drivers will install. The installation is complete and no further action is required.

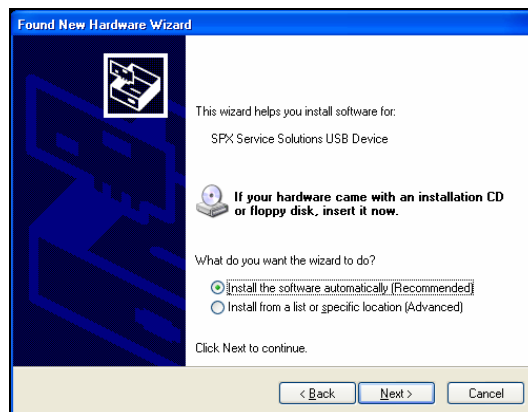


Windows XP: The Windows Found New Hardware Wizard should appear.

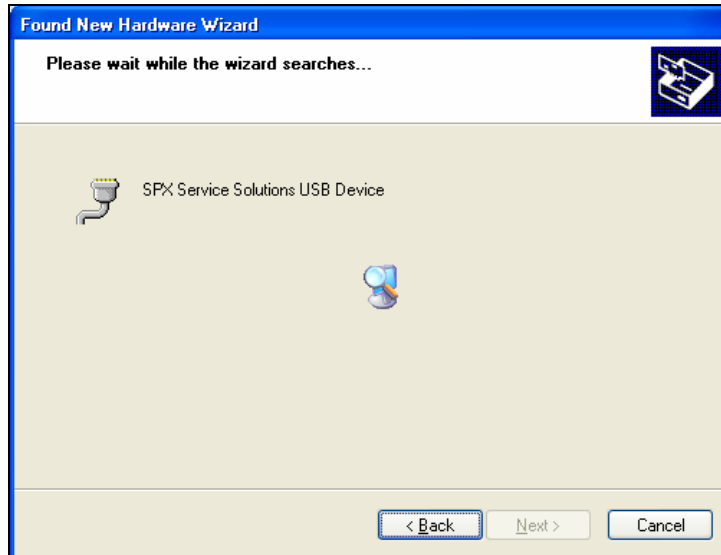
15. Select **Yes, this time only** and click **Next**.



16. Select **Install the software automatically** and click **Next**.



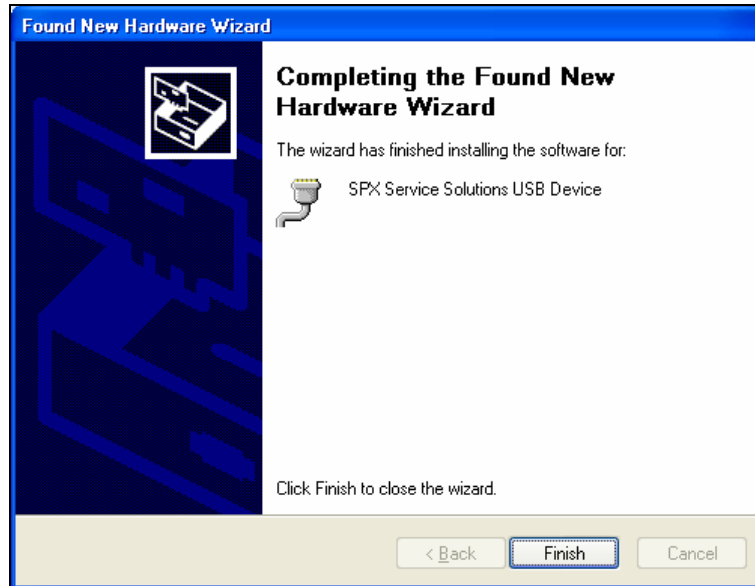
17. Wait while the Wizard searches.



18. If you see the below window, click **Continue Anyway**.



19. When installation is complete, click **Finish**.



20. Scanning Suite installation is complete.