

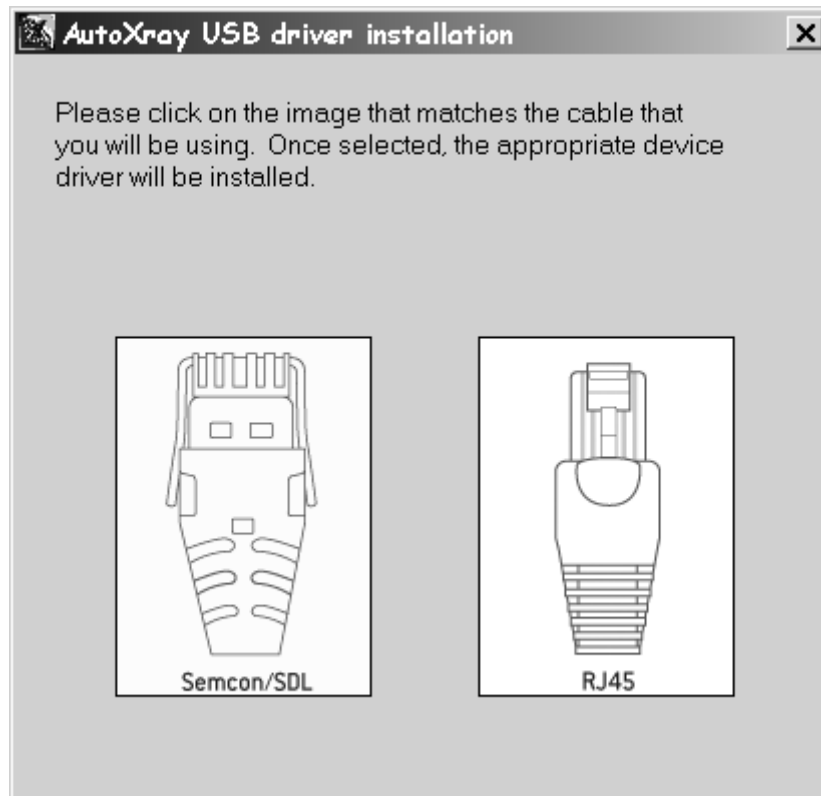
Installation instructions for AutoXray USB cable drivers

Please install software drivers before connecting the USB cable(s) to the PC.

Insert the CDROM. If autorun is enabled, the English USB driver install application will launch. If autorun is not enabled, locate and launch the setup.exe program in the ENG directory.

Driver selection:

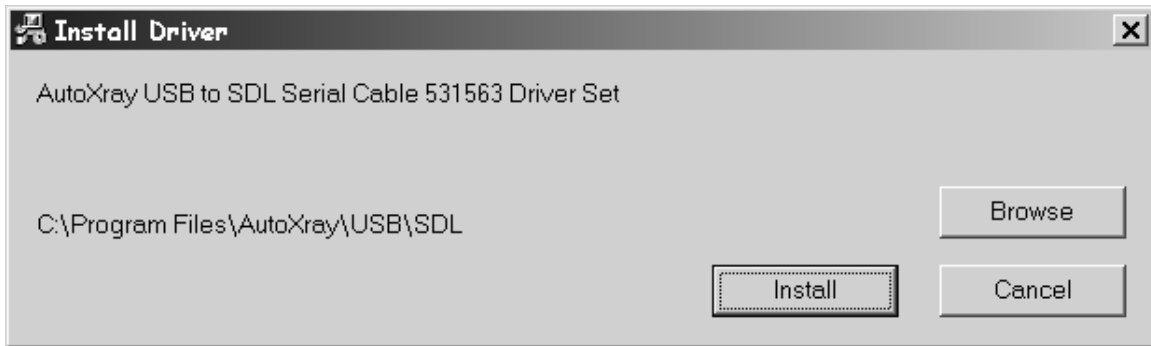
Click on the image of the cable that you purchased [figure 1]. To install both cable drivers, complete the installation procedure for the first cable, then rerun the procedure for the second cable.



[figure 1 – cable selection]

Driver installation:

Once a cable is selected by clicking on the appropriate image, the driver installer will allow you to select the directory in which the drivers are to be copied. Once the directory is selected, click the 'Install' button to proceed [figure 2].



[Figure 2 – driver directory selection]

Windows XP users only: A message will be displayed during the driver installation stating that the driver has now passed Windows Logo testing [figure 3]. Press the ‘Continue Anyway’ button to proceed with installing the drivers, or ‘STOP installation’ if you want to abort.

Note: For each cable driver installed, this message will show up twice.

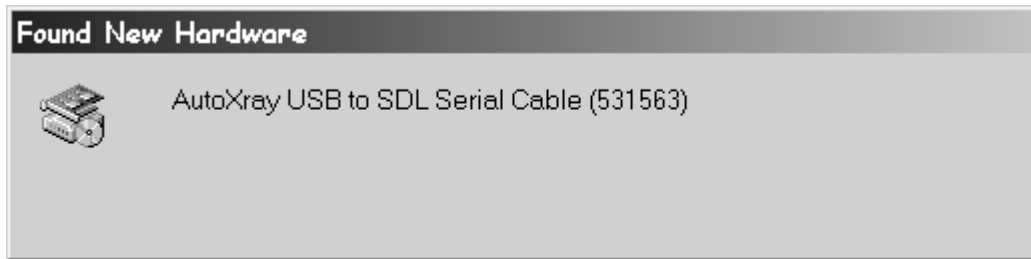


[figure 3 – Windows XP Logo testing message]

The installer will copy the files and display an ‘Installation Successful’ screen. Click the ‘OK’ button to proceed.

Connecting the cable for the first time:

After the USB drivers are installed, the cable(s) can be inserted to any available USB port on the computer. The 'Found new hardware' wizard will be displayed the first time the cable is inserted [figure 4]. The drivers will be registered and the cable will be ready for use.

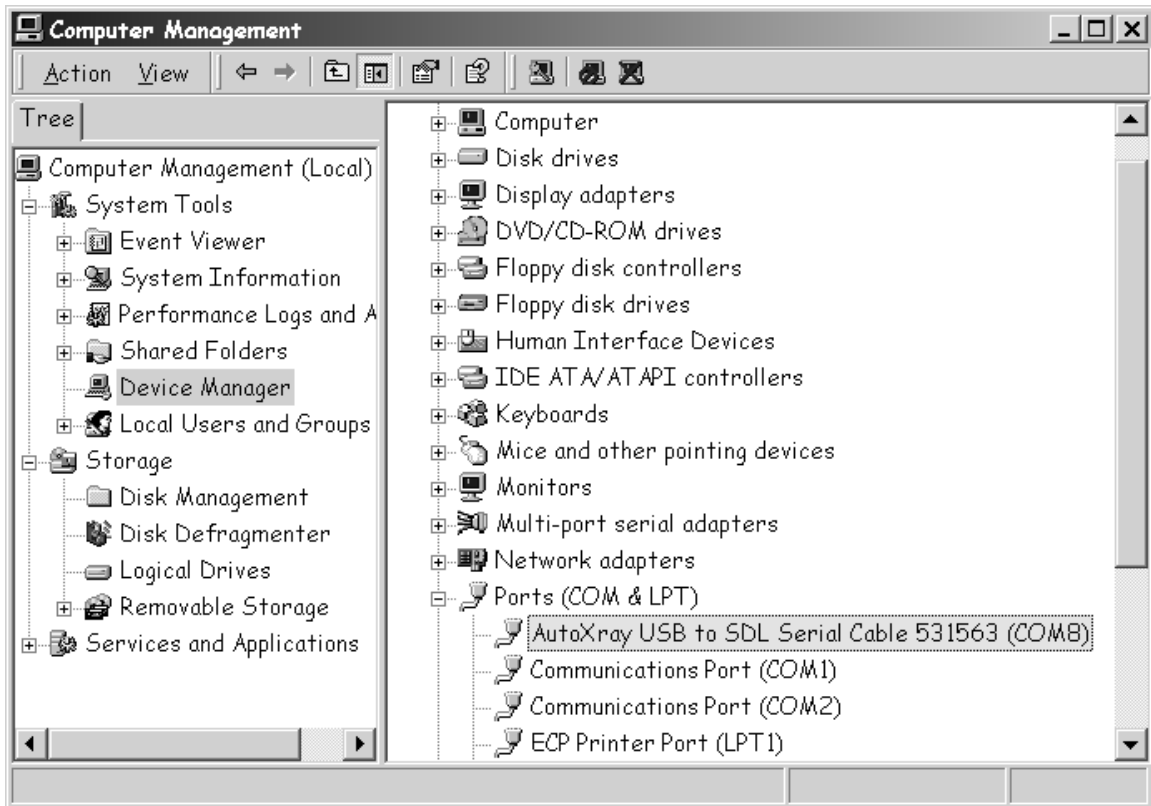


[figure 4 - Found new hardware for first time use]

Which COM port was assigned to the cable?

A virtual serial COM port will be created any time the cable is connected to the PC. To determine which COM port is assigned to this cable, locate the 'Ports (COM & LPT)' list in the Device Manager [figure 5]. The Device Manager can be launched by right-clicking on 'My Computer' and selecting 'Manage' from the context menu. If the cable is connected to the PC, the configured port will show up in the list.

Note: The USB cable must be inserted into a USB port on the PC before the entry will show up in the ports list.



[figure 5 – device manager]

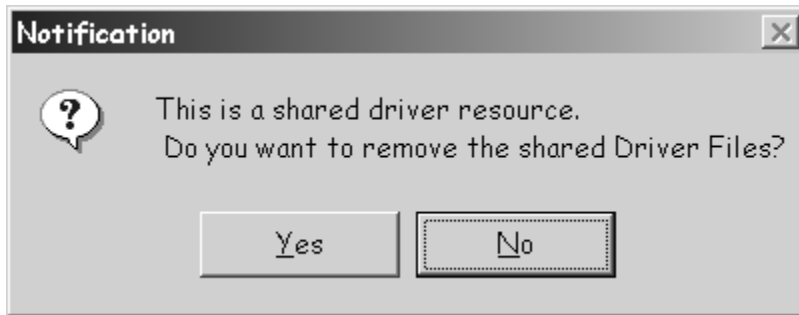
Driver Uninstall:

In the event that the installed USB driver needs to be uninstalled, simply launch the 'Add/Remove Programs' Control Panel. Select the appropriate item and click the 'Change/Remove' button.

The SDL cable will have a driver named 'AutoXray USB to SDL Serial Cable 531563'. The RJ45 cable will have a driver named 'AutoXray USB to RJ45 Serial Cable 531564'.

Note: The driver(s) will only be shown in the Control Panel after the cable has been connected the first time.

A message will be displayed asking how to handle a shared driver resource [figure 6]. Only select 'Yes' to remove the file if there is only one AutoXray USB driver installed. Selecting 'No' with more than one AutoXray USB driver installed will keep cause the uninstall of the other cable(s) to fail.



[Figure 6 – shared driver resource message]